

# CMT

**COLUMBIA  
MARKING  
TOOLS**



**CMT ProMark  
1000/2000  
Fiber Laser**



**Laser Marking**

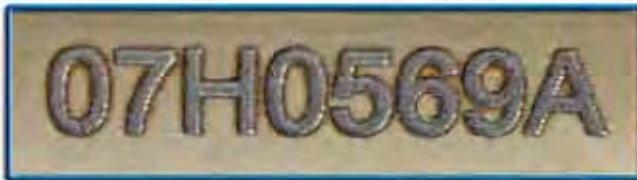
# CMT

Columbia  
Marking  
Tools

# Laser Marking

## CMT Advantages

- The MTBF on our laser source is a minimum of 50,000 hours
- Our systems have a maximum operating temperature of 45°C (113°F)
- Not only are our optics sealed but so are our electronics – a true industrial solution
- Mark on any metal, most plastics and other substrates
- Text, 1 & 2 dimensional bar codes and true grayscale graphics marking
- Standard wall plug operation and high electrical efficiency
- No water cooling or TE cooling eliminating failure points
- Extended temperature range for extreme environments
- PC based with intuitive pop up help features and built in templates
- High quality focusable beam (TEM<sub>00</sub>)
- High repetition rate
- Optimized pulse duration
- Exceptionally high reliability
- Maintenance-free operation



## Materials Marked

CMT laser markers are effective on many materials, including:

- all metals
- most plastics
- rubber
- printed circuit boards
- silicon



*Our laser marking systems are the fastest and most easily integrated laser marking solutions on the market.*



## Software

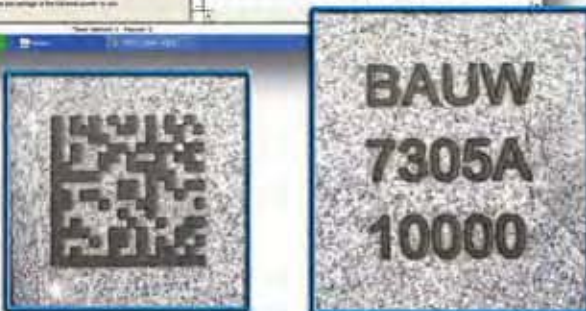
CMT laser markers are driven by **proprietary in-house software** written and constantly improved to be state of the art. Our standard software has one of the most flexible user interfaces available on any laser marking system, from which you can choose either of two forms:

Drag and drop graphical user interface (GUI):

- High turn / low volume applications
- Simple manual user interface
- Fully sortable marking file structure
- WYSIWYG Marking Palette

Industrial GUI:

- High volume variable data applications
- Fully sortable and customizable marking file structure
- File cloning for similar marking files
- Exact coordinate object placing
- Remote access/control from external databases and controllers
- Ultra high speed USB2 data transfer
- Administrator, Engineering, & User security levels
- Customizable by software staff



# CMT

Columbia  
Marking  
Tools

# Laser Marking

## Laser Marking Workstation

System includes:

- Class 1 laser enclosure with easy open (horizontal) front door with integrated cycle interrupt safety switch. Door is to be automatic open
- Exterior side mount tray for 15" flat screen, keyboard & mouse
- Operator E-stop & cycle start button panel on front of machine
- PC controller with 15" flat screen monitor, keyboard & mouse
- All components fully integrated into CMT base and tested
- Choice of focal height adjustment
  - Fixed, manual, power or programmable automatic Z-Axis
- T-Slotted work surface
  - 10" x 30" workpiece table
- Available marking window is 4" x 4" (pending lens selection)
- Illuminated Enclosure
  - Inside enclosure illuminated for operator
- Single-plug power supply
  - One 115V plug powers the entire unit
- Operation and safety manuals
  - Printed and electronic media
- Heavy duty base with casters

## CMT ProMark 1000/2000 Fiber Laser



### Custom Station



### Options

- Fixed Z-Axis
- Manual Z-Axis - Position indicator
- Power Z-Axis - Electrical slide
- Automatic Z-Axis - Programmable focus control
- Rotation axis for 360° marking
- Automatic part loading door
- Pick and Place devices
- Vision verification for 2D codes
- PC and Monitor\*

\*PC preloaded with vision software for 2D applications.

### Accessories

- Startup/Training
- Custom fixturing
- Fume extraction
- Powersure AC line conditioner
- External beam focus finder
- Laser Safety Glasses



For additional details please inquire at [info@columbiamt.com](mailto:info@columbiamt.com)

[www.columbiamt.com](http://www.columbiamt.com)

27430 Luckino Dr. • Chesterfield, MI 48047 • 586.949.8400 • 586.949.8401 fax

# CMT

**COLUMBIA  
MARKING  
TOOLS**



**Wide Range of Products:**  
Programmable Systems  
Dot-Peen & Scribe  
Laser  
Numbering Heads  
Roll Marking Machines  
Air & Hydraulic Presses  
Hot Stamping Systems & Machines  
Stamping Dies & Retainers  
Standard Type  
Hand Tools  
Custom Marking Dies  
Embossing Dies

27430 Luckino Dr  
Chesterfield MI 48047

586.949.8400  
586.949.8401 fax  
info@columbiamt.com

www.columbiamt.com

